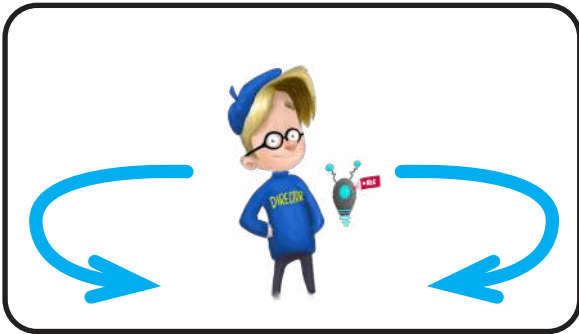
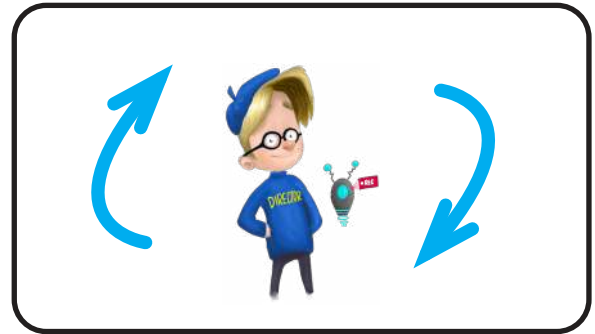


CAMERA MOVEMENTS



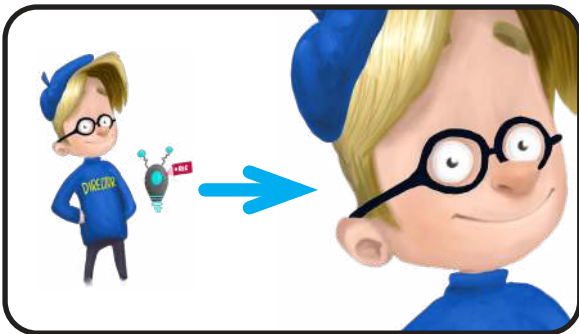
PAN

Moving the camera from left to right on one spot.



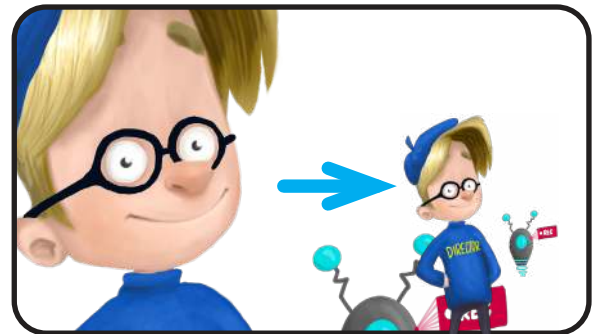
TILT

Moving the camera up and down on one spot.



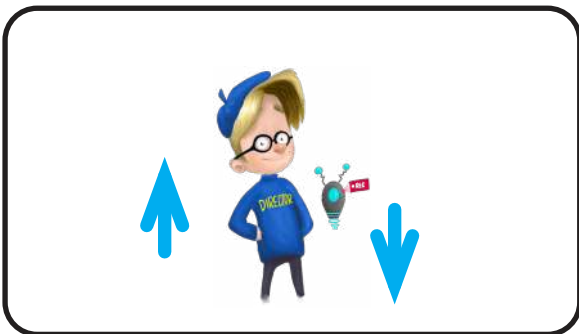
ZOOM IN

Bringing the shot closer to the subject without moving the camera



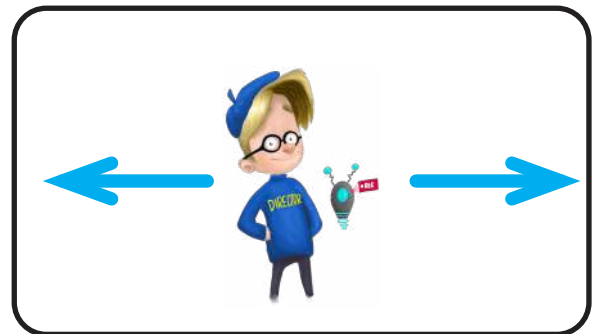
ZOOM OUT

Bringing the shot away from the subject without moving the camera



DOLLY IN/OUT

Similar to a Zoom, this is gliding the camera back or forward whilst secure. This is usually done on a track and wheels.



TRUCK

Moving the camera from left to right on a secure track.